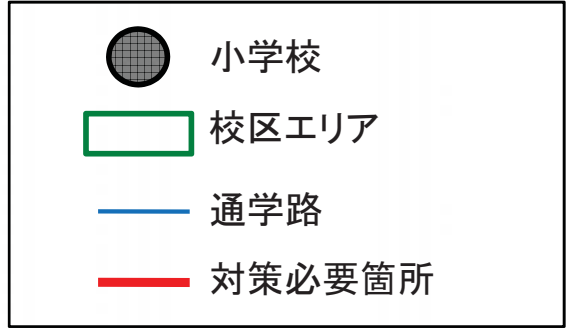
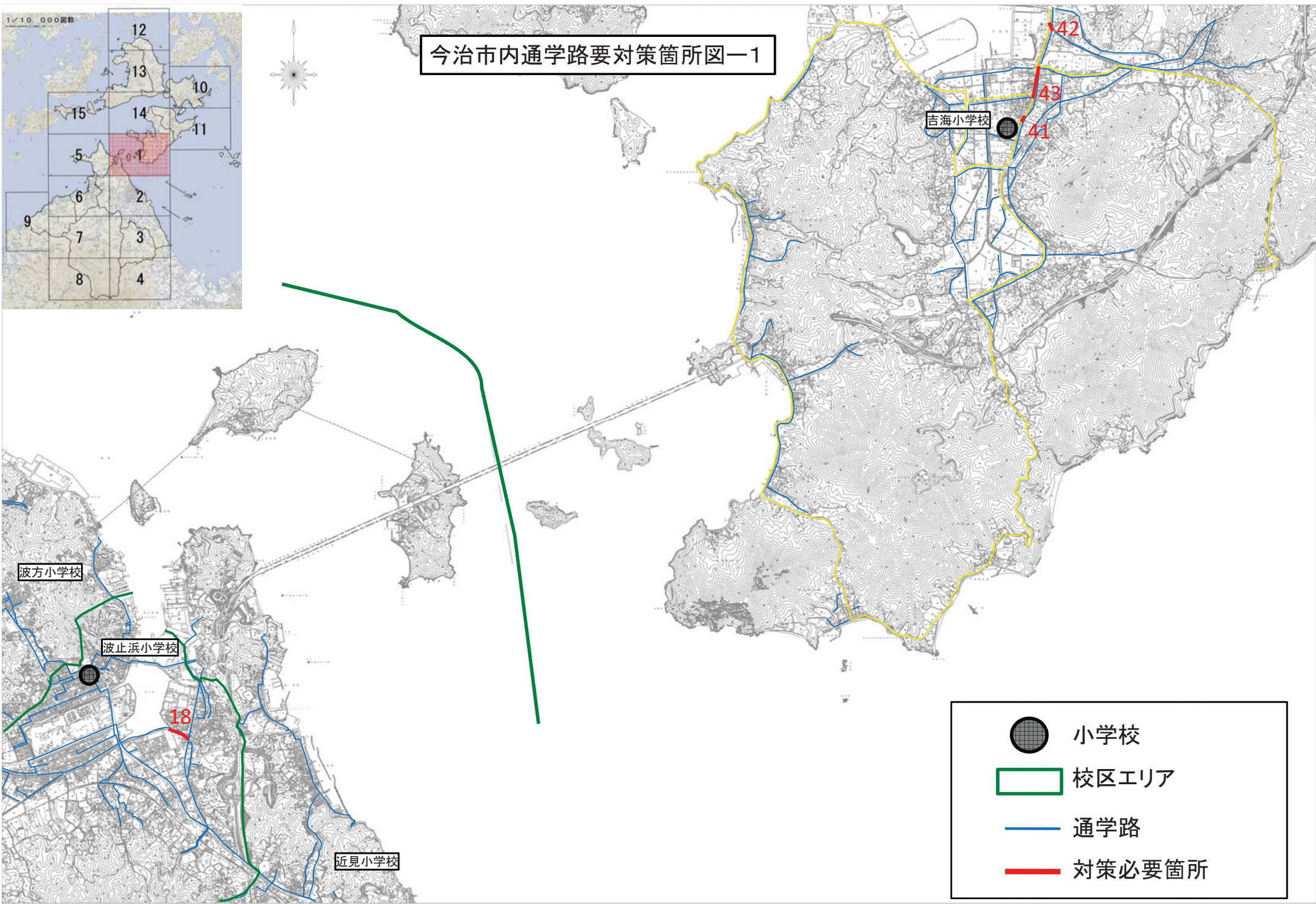
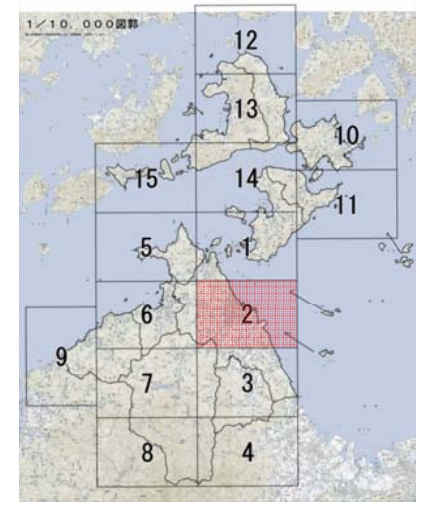
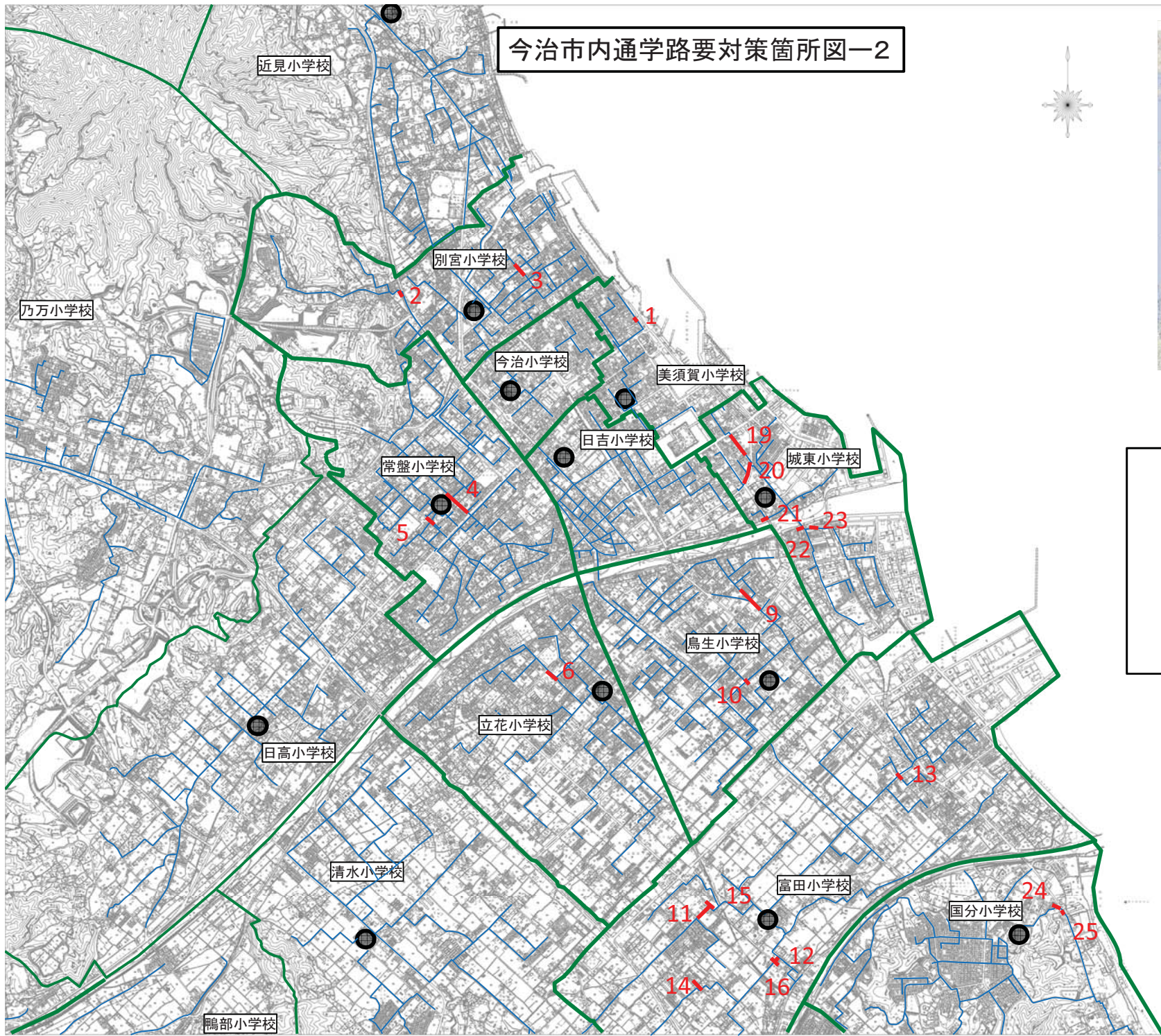








今治市内通学路要対策箇所図一1



今治市内通学路要対策箇所図一2



-  小学校
-  校区エリア
-  通学路
-  対策必要箇所

今治市内通学路要対策箇所図一3

鵜部小学校

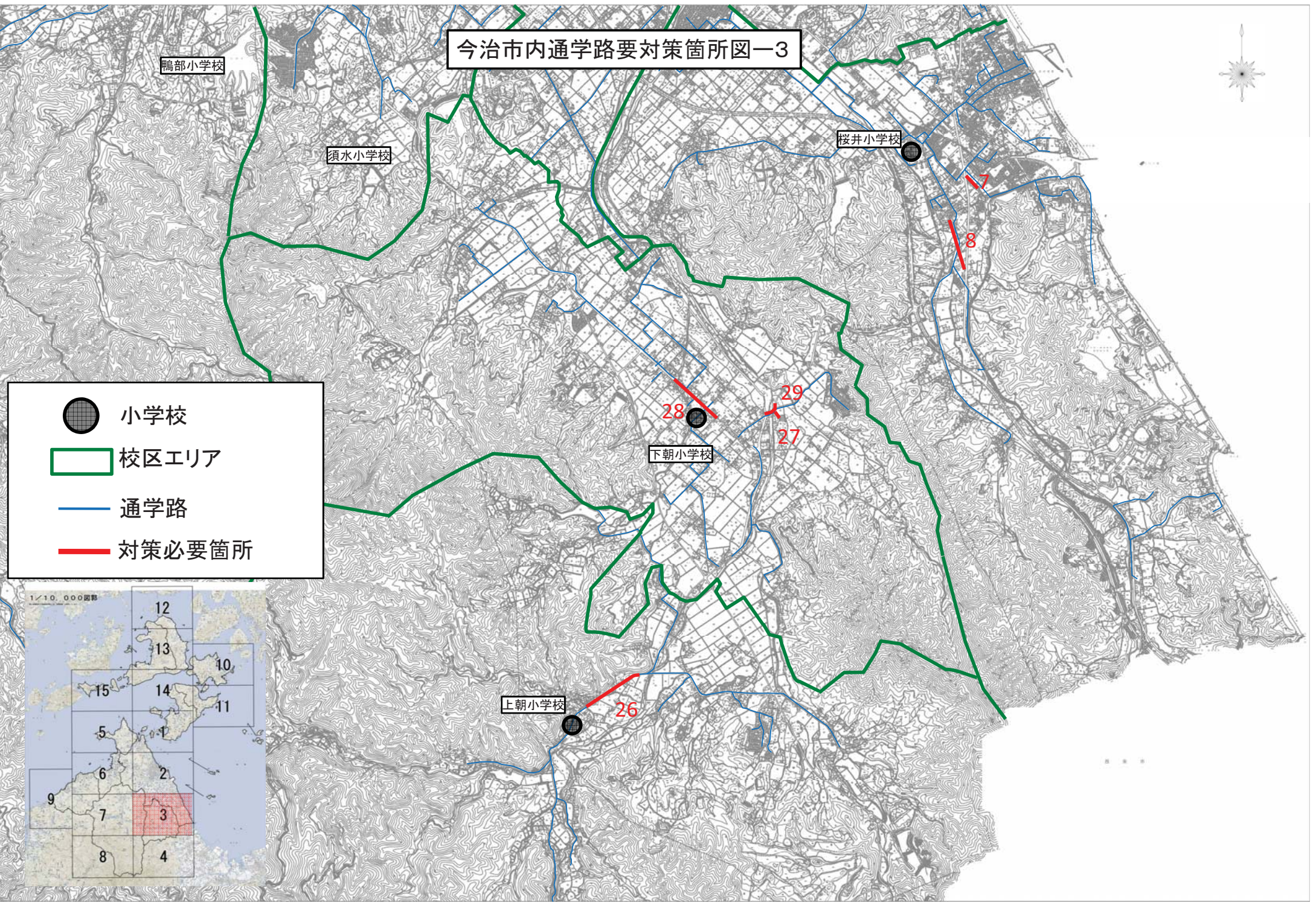
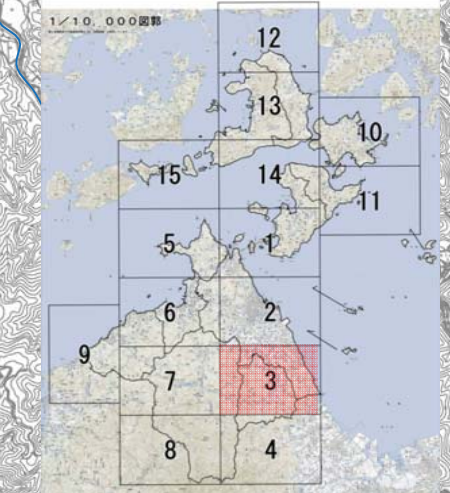
須水小学校

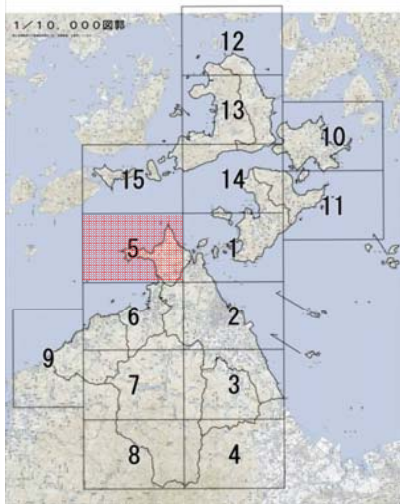
桜井小学校

下朝小学校

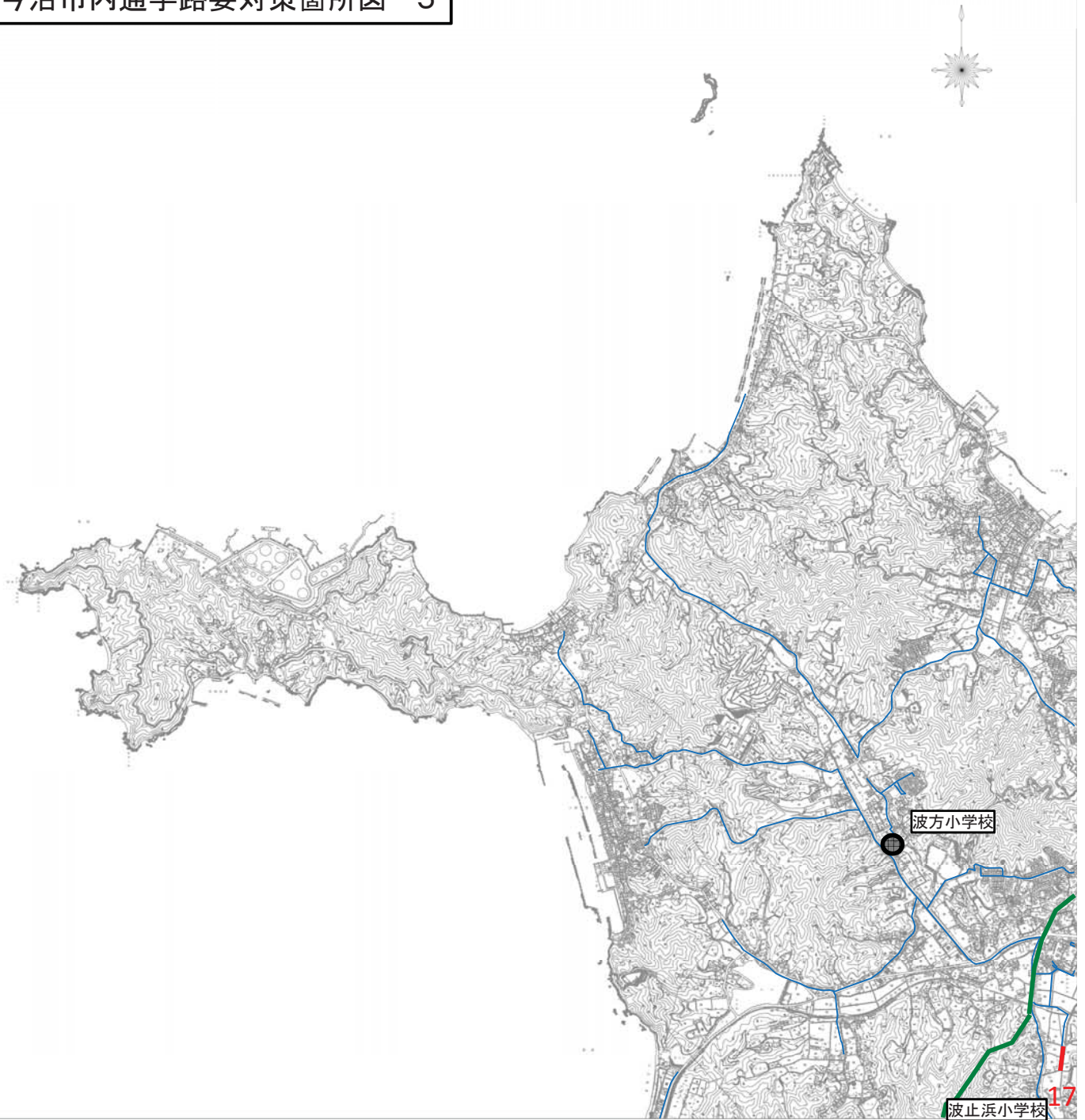
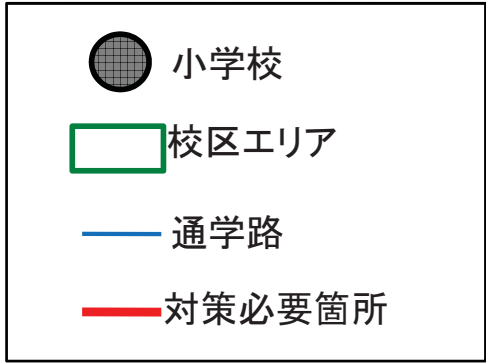
上朝小学校

- 小学校
- 校区エリア
- 通学路
- 対策必要箇所

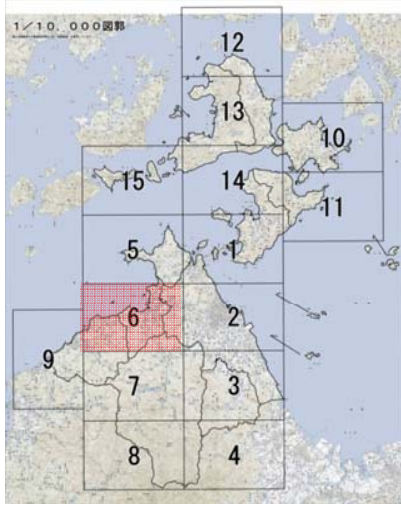




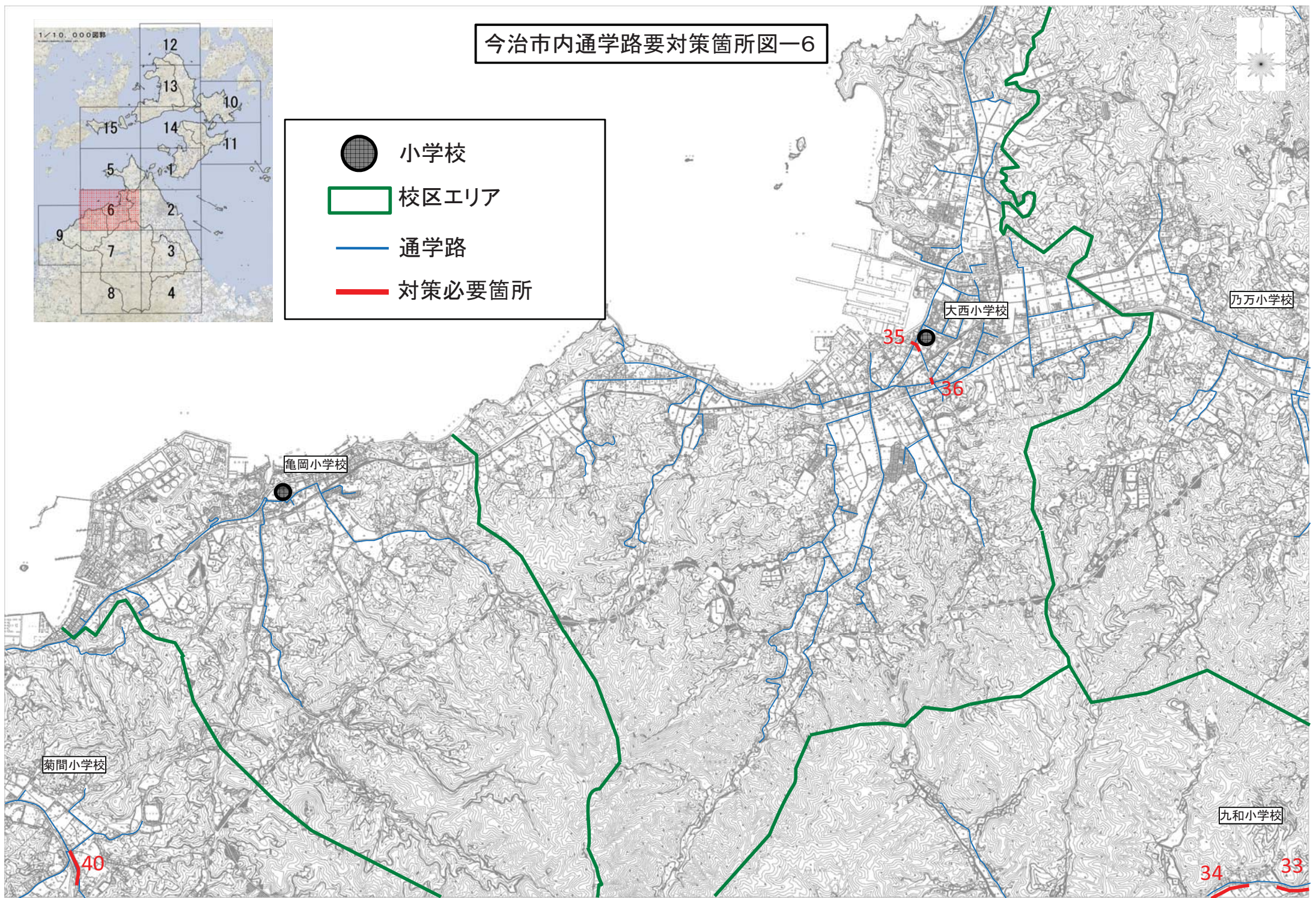
今治市内通学路要対策箇所図—5



今治市内通学路要対策箇所図一6

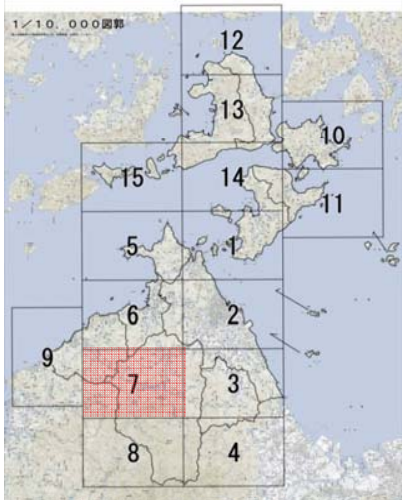


- 小学校
- ▭ 校区エリア
- 通学路
- 対策必要箇所



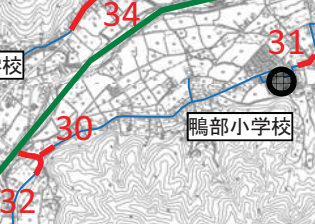
今治市内通学路要対策箇所図一7

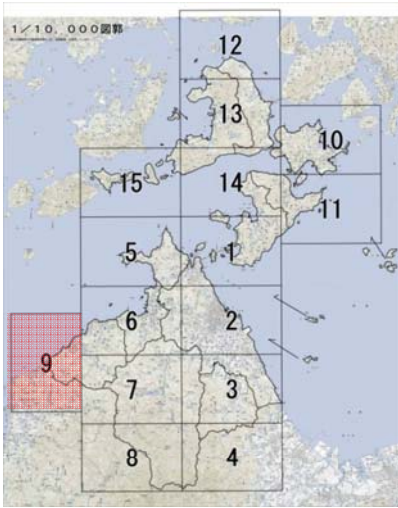
- 小学校
- ▭ 校区エリア
- 通学路
- 対策必要箇所



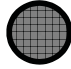


九和小学校

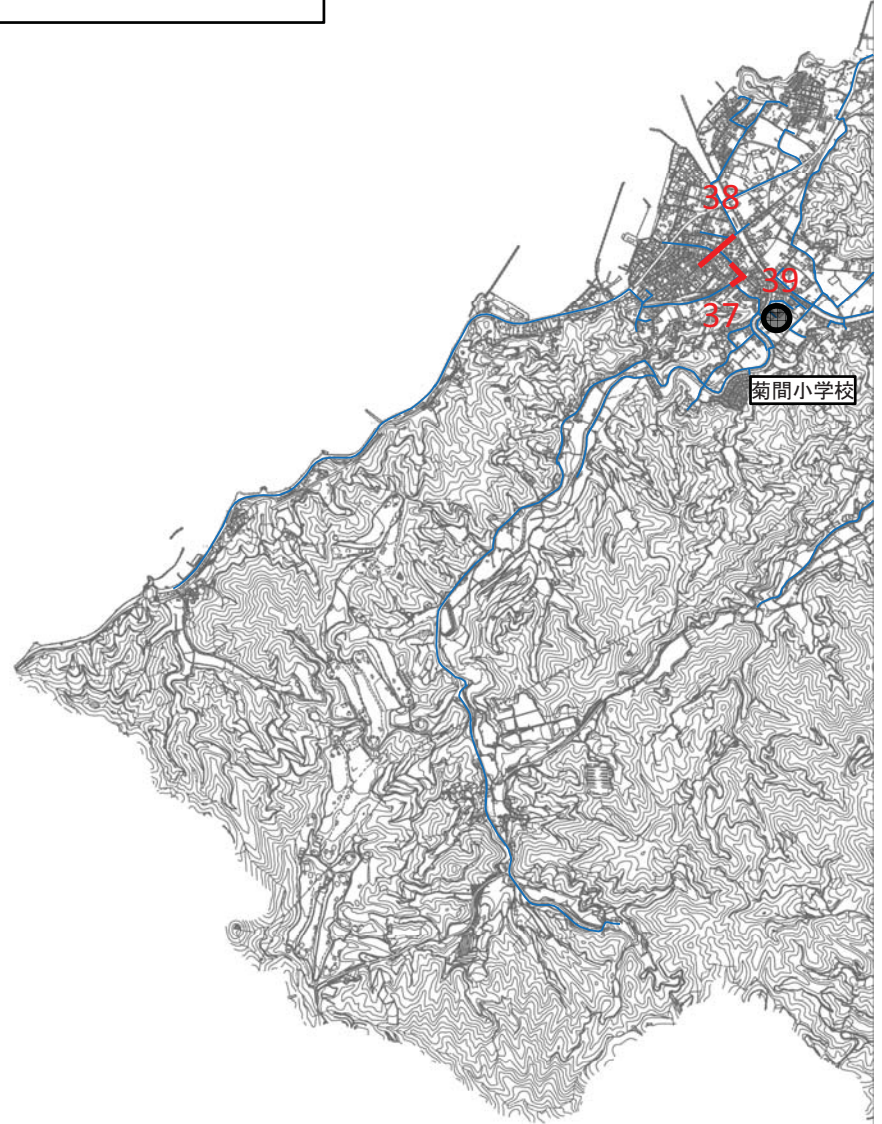
鴨部小学校



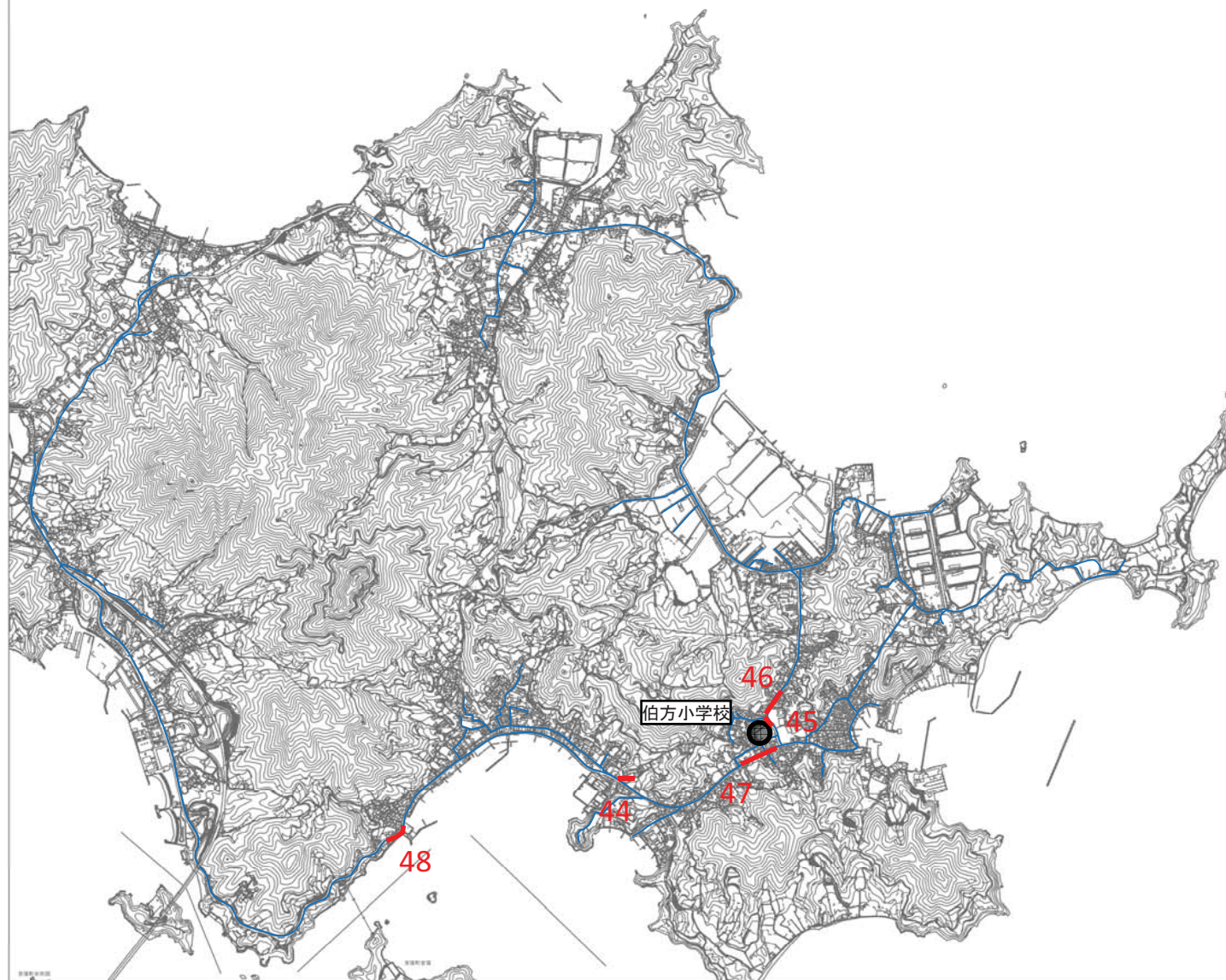
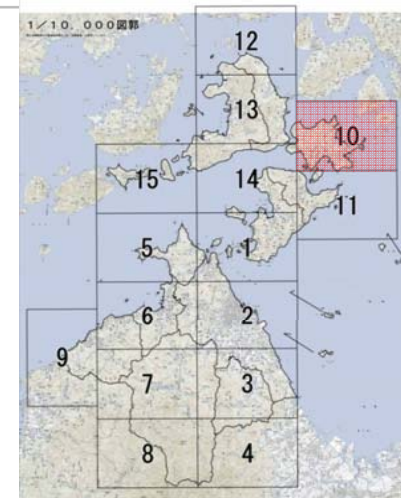


今治市内通学路要対策箇所図 - 9

-  小学校
-  通学路
-  対策必要箇所



今治市内通学路要対策箇所図-10



- 小学校
- 通学路
- 対策必要箇所